

CABLE 288 RF: HIROSE U.FL + RP SMA STRAIGHT BULKHEAD JACK WITH O-RING RATED TO IP67/68 + MULTIPLE CABLE SIZES

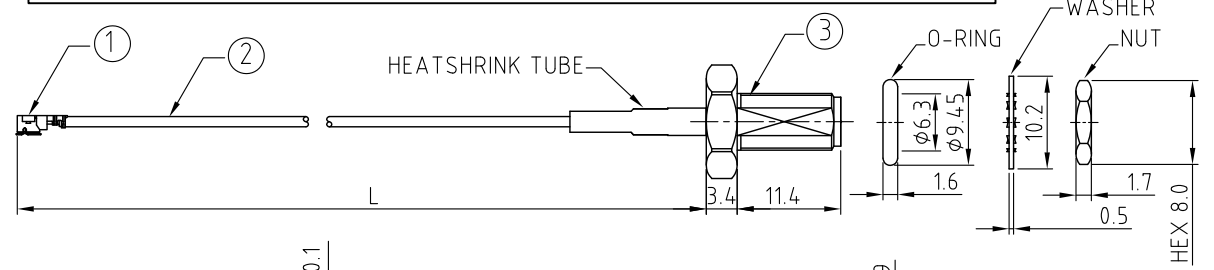
SPECIFICATIONS :

- HIROSE U.FL PLUG, P/N: FOR  $\phi 1.37\text{MM}$  CABLE: U.FL-LP-088.  
FOR  $\phi 1.13\text{MM}$  CABLE: U.FL-LP-068.  
FOR  $\phi 1.32\text{MM DS}$  CABLE: U.FL-LP-066.
- COAXIAL CABLE, SEE P/N OPTIONS.
- RP SMA STRAIGHT BULKHEAD JACK WITH O-RING RATED TO IP67/68, P/N: RFCT-SMA008-F78.

**USAGE PRECAUTIONS: CABLES USING 'MICRO' COAX ARE DELICATE:**  
 (i) HANDLE WITH CARE.  
 (ii) DO NOT TWIST; APPLY EXCESSIVE FORCES OR SHARP BENDS TO THE CABLE. DO NOT FORCEFULLY DEFORM WIRES.  
 (iii) CONSULT CONNECTOR MANUFACTURER'S DATASHEETS FOR DETAILED NOTES ON HANDLING INSTRUCTIONS.

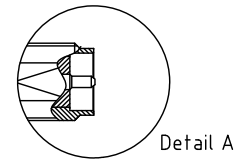
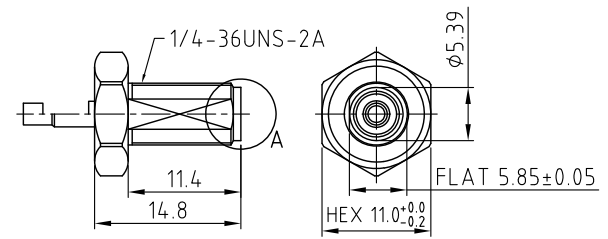
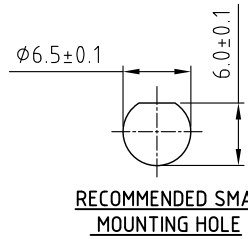
ENVIRONMENTAL:

- A. BULKHEAD MOUNTED CONNECTOR (RFCT-SMA008-F78) TESTED TO THE FOLLOWING SPECIFICATION:
- IP6X - DUST TIGHT - NO PARTICLE INGRESS.
  - IPX7 WATERPROOF FOR 30 MINUTES UP TO 1 METER UNDERWATER.
  - IPX8 WATERPROOF FOR 48 HOURS AT 1 METER UNDERWATER.
  - IPX8 WATERPROOF FOR 12 HOURS AT 5 METERS UNDERWATER.
  - PRESSURE TEST - 1 BAR FOR 10 SECONDS.



NOTES:

- THE ORIENTATION OF CONNECTORS ON DRAWING IS FOR REFERENCE ONLY, IF THE ORDER IS LEFT BLANK THE CONNECTOR WILL NOT HAVE FIXED ORIENTATION.
- FIXED ORIENTATION IS SUGGESTED FOR CABLE LENGTH 25MM TO 100MM. PLEASE SPECIFY THE FIXED ORIENTATIONS FROM THE ORDER CODE (F1, F2, ETC)
- CONTACT GRADCONN IF THE ORIENTATION YOU REQUIRE IS NOT SHOWN.
- WORKING FREQUENCY RANGE: DC-3GHZ.
- OPERATING TEMPERATURE: -40°C TO +85°C.
- IMPEDANCE: 50 OHM.



HOW TO ORDER

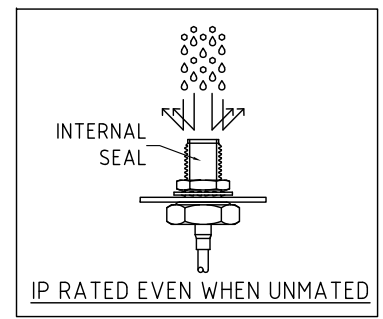
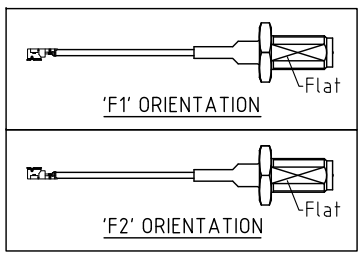
CABLE 288 RF - X X X - X X - X - X

"L" LENGTH IN MM:  
 eg: 100MM = 100  
 (MIN. 050-MAX.400)  
 STANDARD = 100, 150, 200  
 Tolerance: 50-200mm:  $\pm 5\text{mm}$ .  
 201-400mm:  $\pm 7\text{mm}$ .

CABLE SIZE OPTIONS:  
 1 =  $\phi 1.37\text{MM}$  CABLE, COLOR: BLACK.  
 2 =  $\phi 1.13\text{MM}$  CABLE, COLOR: GRAY.  
 3 =  $\phi 1.32\text{MM DS}$  CABLE, COLOR: GRAY

WASHER AND NUT OPTIONS:  
 BLANK = SEPARATELY PACKED (STANDARD)  
 A = ALL ASSEMBLED WITH CONNECTOR

ORIENTATION OPTIONS:  
 BLANK = DOES NOT HAVE A FIXED ORIENTATION  
 F1 = U.FL CONNECTION DOWN (L=25-200MM)  
 F2 = U.FL CONNECTION UP (L=25-200MM)  
 (SEE NOTES 1, 2, 3 AND DIAGRAMS FOR MORE INFORMATION)



REV. DATE & DRN  
 10 23/02/21 - NEW RELEASE  
 11 23/02/21 - NEW RELEASE  
 12 10/03/24 - CC - IP RATING VIEW  
 13 10/03/24 - CC - IP RATING VIEW

Scale: NTS	THIRD ANGLE	Unstated .X .XX .XXX ANGLES	Tolerances: N/A N/A N/A N/A
Drawn: CC			
App'd: XXX	Title CABLE ASSEMBLY		
Date: 10 MAR '24	Revision: 1.2	Unit: mm	



IP Rated RF Products www.gradconn.com

THIS DRAWING IS CONFIDENTIAL AND MUST NOT BE COPIED OR DISCLOSED WITHOUT WRITTEN CONSENT

Type: Cable 288 RF
CABLE 288 RF
Drawing Number:
Sheet 1 of 1
Drawing © E and O E